



**Dance
Comedy
Art
Crafts
Music**

Finsbury Arts Festival



St Luke's Centre
90 Central Street EC1V 8AJ
020 7549 8181
www.finartsfest.org.uk

Follow us on Facebook:
St Luke's Centre Face Book

**St. Luke's
Centre**

Friday 26 February, Saturday 27 February & Sunday 28 February 2010

Welcome!

The Finsbury Arts Festival is back! Bigger and better than the first one in 2009, and well on course to becoming a popular and established date in the local calendar. This year's programme of events is even more diverse and eclectic; there is sure to be something to do for everyone.

The Finsbury area of south Islington is an area steeped in history and surrounded by some of the world's best-known arts venues such as the Barbican and Sadler's Wells. In contrast, the Finsbury Arts Festival is a community-led grass-roots arts festival that celebrates art by local children, parents and other residents, groups and organisations.

I am grateful to all the local artists who have put so much time and effort into helping stage the three day celebration, everybody in the Finsbury and EC1 neighbourhood taking part, and for those coming along to support us. Finally a big thank you to all our sponsors.

Have a great Festival!

Martyn Craddock
Chief Executive
St Luke's Centre



**Dance
Comedy
Art
Crafts
Music**

What's happening? A quick guide

Friday 26 February

Arts, crafts and comedy

**"Paint your market" at
Whitecross Street Market**
FREE 11am - 3pm
Page 4

**Banner parade (St Luke's
Primary School to St Luke's
Community Centre)**
FREE 3.30pm
Page 4

Children's crafty tea party
FREE 4pm - 6pm
Page 4

Live Friday Night Comedy:
Paul Lyalls hosts an evening
with comedians Adam Bloom
and Markus Birdman
8pm - 11pm
Tickets: £10
Page 4

Saturday 27 February

Art, dance, music and
entertainment

Exhibitions:
see the wealth of local
talent in photography,
painting and craft
FREE 11am - 4pm
Page 5

Art zone: workshops with
lots of different materials,
colours, shapes and sizes.
FREE 11am - 4pm
Page 6 - 7

Performance: Guildhall
School of Music, Dance with
Daniel Vais, B2B Fashion
Show, EC1 Music Project &
St Luke's Drama Society
FREE 11am - 7pm
Page 8

Turkish Family Night:
experience traditional Turkish
culture with food, drink,
music and dance
7.30pm - 11.00pm
Tickets: £5
(free for under 5s)
Page 9

**For events that
need tickets ring
020 7549 8181**



Sunday 28 February

Dance, music, singing,
drama, poetry & comedy

**Everybody Draw:
drop in and help create
a giant drawing**
FREE 11am - 4pm
Page 10

Drum Jam
FREE 11am - 1pm
Page 10

Story telling
FREE 11am - 12pm
Page 10

Sing for Fun
FREE 11am - 12.30pm
Page 10

Acting for Fun
FREE 12.30pm - 2pm
Page 11

Poetry workshop
FREE 2pm - 3pm
Page 11

Belly dance workshop
FREE 2pm - 4pm
Page 11

Family Comedy Show
FREE 3pm - 4pm
Page 12

Afternoon tea dance
FREE 2pm - 4pm
Page 12

**An evening with
poet John Hegley**
7pm - 10pm
Tickets: £7
Page 12

Friday 26 February

Paint your market

11am - 3pm

Paint Large! Shoppers, traders and local residents come along and help us create a big painting of Whitecross Street Market. You could add your favourite stall, shop, friends or even the dreams you have walking along. The finished work will be displayed at the festival on Saturday.

Banner parade

3.30pm

Follow the colourful and musical procession of banners made by children at St Luke's Primary School to mark the start of the Finsbury Arts Festival. Led by the Mayor of Islington, the parade will start at the school on Radnor Street and end at St Luke's Centre.

Children's crafty tea party

4pm - 6pm

Children are invited to teatime creative activities including glass painting, fun with felt, card and jewellery making, run by St Luke's Timebank. No cost, no need to book, just drop in and enjoy yourself. Also listen to classic children's stories with Terry Haslam. Come on a bear hunt or find the monster!

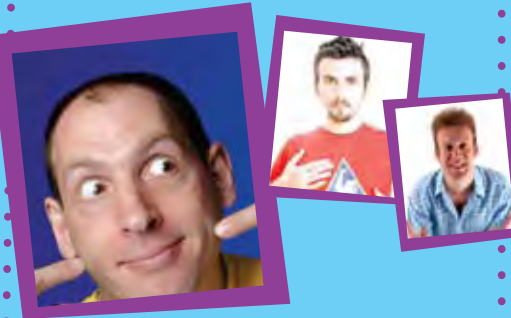
Friday is sponsored by:



Live Friday night comedy

8pm-11pm

- Prepare to be in stitches as the Finsbury Arts Festival brings you two stars of the world comedy festival circuit.



• ADAM BLOOM 'In the premiere league of comedy' - The Independent

• 'One of my favourite stand-ups' - Ricky Gervais

• MARKUS BIRDMAN 'Looks like the 4th Muskateer, infectious, likeable and popular with the crowd' - The Stage

• The night will be hosted by Paul Lyalls, 'Playfully comic' - The Glasgow Herald

• **£10 per person** - Ages 18 and over.
• Licensed bar.
• Please call St Luke's Centre on 020 7549 8181 to reserve your tickets.

Comedy Night sponsored by:



Saturday 27 February

Arts exhibitions

11am - 4pm

Visit the St Luke's Centre art gallery, with striking exhibitions of photography, paintings and craft. Local artists prove they've really got what it takes to make an impact.

UNDERWATER PHOTOGRAPHY EXHIBITION

Not content with photographing people at ground level, photographer, Ruth Corney managed to convince a bunch of willing staff, users and volunteers from St Luke's Community Centre to pose underwater at Ironmonger Row Baths. Come and see the results...

KING SQUARE NURSERY ART DISPLAY

Following their regular visits to St Luke's Centre the nursery children have created us a very special display of their art work.

ST LUKE'S CENTRE OVER 55S ART EXHIBITION

The over 55s art class is one of St Luke's Centre's most popular activities. The group, led by artist and tutor, Clare Brooks, has created another art exhibition that yet again demonstrates the immense artistic talent of the local older community.

KINGS CORNER PROJECT T-SHIRT DISPLAY

Working alongside artist Jaleel Muhammed, young people from Kings Corner Project have displayed the innovative t-shirts they have designed using screen printing technique.

Saturday is sponsored by:



CHANGING PLACES

Changing Places is an exhibition of digital photography created by young people from Toffee Park Youth Club and older visitors to St Luke's Centre, telling their stories of life in EC1. The work presented is part of an inter-generational art project led by artists from All Change.

ST LUKE'S SCULPTURE

Artist, Zoe Wilson-Dutton, from Mary Ward Centre has been working with a group of older users of St Luke's Centre to create a hanging sculpture especially to enhance the garden during the Festival. Admire their work.

ST LUKE'S COMMUNITY ART GROUP

Led by volunteer artist, Graham Rousell, this group of talented local residents display their artwork in this their first public exhibition.

ST LUKE'S CHILDREN'S CRAFT CLUB

Local primary school children have joined the newly created craft club led by artist Giulia Ricci and have produced amazing 2 and 3D artworks on the themes of landscape and the built environment that surrounds us.

Saturday 27 February

Art zone

11am-4pm

Come and get creative with materials from paint to fabric, butter cream to tin cans. Take your pick! No skills or bookings required. All materials provided.

Suitable for all ages.

Aerosol art

Join cutting edge graffiti artist A. Dee, aka The Artful Dodger, and help transform the drab St Luke's Centre garden walls with vibrant colours and innovative urban art.

Creative book binding

Learn the most basic bookbinding technique, "The Pamphlet Stitch" with the Henningham Family Press. Used for hundred of years for making journals, notebooks, mini-books, Orders of Service... once you know this simple stitch, the possibilities are endless!



T-shirt print screening

Screen print your own custom designed t-shirt from stencils with Jaleel Muhammed. Then walk away with your own designer clothing!



Fancy fairy cakes

Come and learn how to transform your cakes into edible works of art using icing, marzipan and butter cream. Workshop run by Mary Joan and Kieran Redmond of Fancy Fairy Cakes.



Saturday 27 February

Split splat spin painting

This workshop was so popular last year that we decided to run it again! Create a fantastic high-energy painting with a twist. No experience necessary as designer Pete Wilson will be on hand to help.



Badge making

The Recyclebillies invite you to come and make a cup cake badge out of an old jumper. Young children will need to be supervised.



Fabulous funky mobiles

Make a mobile using new and recycled materials with artist Caroline McCambridge. Have fun with shapes and colours to create a mobile sure to brighten up any room.



Tin can plant pots

Get creative and transform an old food tin into an original plant pot. You can choose the shape, size and design and get your own herb, salad or flower to plant up and take home.

Make a mini beast hotel

Create a magnificent mini-beast hotel to encourage lots of tiny creatures to come and stay. All participants will be able to design their own room, with features such as pebbles, twigs or leaves, to add to the building. Each mini beast habitat can also be taken away to encourage more wildlife at home.

FAF photo booth

Visit photographer, Ruth Corney's very special photo booth and have your photo taken as a souvenir of your visit to the Finsbury Arts Festival! Cost just £1 per person.

Saturday 27 February

Performances & entertainment

11am - 7pm

Be prepared for a day of professional and varied entertainment including music, dance, fashion and drama – much of which is provided by local talents.



Programme:

11.15am - 11.30am

Welcome speeches from Councillor Ruth Polling, Executive Member for Leisure & Equalities, and Martyn Craddock, Chief Executive, St Luke's Trust.

11.30am - 12.30pm

Guildhall School of Music

Emerging musicians will play the clarinet and bassoon for your enjoyment.

12.30pm - 1.30pm

B2B Fashion Show

Fashion show and behind the scenes look at how clothes are designed by local girls sewing group.

1.30pm - 2.30pm

Dance with Daniel Vais

Professional international dancer, Daniel Vais, will pass on his passion for dance with exciting performances

3pm - 4pm

EC1 Music Project

Talented musicians and singers from this local young people's project will show their love for music.

St Luke's drama society

6pm - 7pm

The new St Luke's Drama Society perform their first play, entitled TWO by the playwright Jim Cartwright. Set in a local pub, we spend an eventful night in the company of the landlord and landlady as they introduce us to their story and the customers who drink there. A wonderful play, provoking tears of laughter one minute, tears of sadness another, it's a perfect production for those new to the theatre. Come along and support your neighbours in their first performance and have a great night too.

The FREE performances will be showing on:

Thursday 25th February, Vibast Community Centre, 163 Old Street, EC1V 9NH, 7-8pm

Saturday 27th February, St Luke's Centre, 90 Central Street, EC1V 8AJ, 6-7pm

Thursday 4th March, Finsbury Library, 245 St John Street, EC1V 4NB, 7-8pm

Suitable for adults and children aged 15+. Please call St Luke's Centre on 020 7549 8181 to reserve your **FREE** tickets.



Saturday 27 February

Family Turkish night

7.30pm - 11pm

This wonderful family event will celebrate the local Turkish community with a cultural evening of Turkish music, dance and food. Enjoy the original tastes of Turkish cuisine with a splendid meze, along with a glass or two of raki, followed by traditional belly dancing. Adults can then dance the night away whilst children will be kept happy with our "giant" games.

£5 per person including meze

(free for under 5s)

Licensed bar.

Please call St Luke's Centre on

020 7549 8181 to reserve your tickets.



Sunday 28 February

Everybody draw

11am - 4pm

Come and get the whole family drawing with Everybody Draw: a free, fun, and exciting activity led by artists from Cubitt Education. Drop-in at any time during the day and explore a variety of materials and drawing techniques to help us create a giant drawing that explores imaginary and real stories of Finsbury past and present.

Drum jam

11am - 1pm

It's time to get noisy with Sunday's drum jam. Everyone is invited to join in beating the African drums, feeling the rhythms and creating a cacophony of primal sounds.

Led by South African drummer and musician Somesh De Swardt, Drum Jam have entertained and engaged thousands of community groups across the country. Drumming circles are good for your health, diffusing stress and promoting well-being, they also build teamwork, but most importantly they are a lot of fun.

And don't worry if you think you have no musical ability, **"anyone with a heartbeat can learn to drum"** says Somesh. For adults and children of all ages.

Sunday is sponsored by:



Sing for fun

11am - 12.30pm

Whether you simply enjoy singing in the shower, or you're in a choir, or even if you think you can't sing, come and join in Sunday morning's heart-warming big sing, 'Sing for Fun'.

Angela Reith, experienced singing leader, will be teaching harmony songs from around the world and from closer to home - including jazz, African, folk, pop, and community favourites.

You don't need to read music or have a great voice to join in: "If you can walk, you can dance; if you can talk, you can sing" (Zimbabwean proverb). Come and join in the fun! For adults and older children

Story telling & craft

11am - 12pm

Take part in an arts and crafts workshop where you get to make and design a wild things monster mask. Terry Haslam will read the well loved Maurice Sendak story and children can rumpus to their hearts content. Let the wild rumpus begin! Young children.

Sunday 28 February

Acting for fun

12.30pm - 2pm

Enjoyed drama at school? Always thought you could 'tread the boards'? Like a fun hobby in a friendly atmosphere? Want to boost your confidence?

Yes? Don't put it off any longer and come along to this acting workshop where we are offering a taster session of fun icebreakers and drama games, led by professional actor and lecturer Peter Glover. For adults of all ages.

Belly dance for beginners

2pm - 4pm

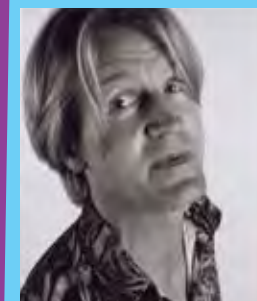
Learn to belly dance with experienced instructor and performer, Daniel Vais, who will share this beautiful and empowering dance. Suitable for adults of all ages this workshop will be full of inspiration, energy and great fun!



Poetry workshop

2pm - 3pm

Steve Tasane is the master of tongue-twisting, mind-boggling alternative poetry. Over the last dozen years you could have caught his dynamic performances almost anywhere: Glastonbury, The Barbican, Ronnie Scotts and even Battersea Dogs Home. Come and join him for an afternoon of lyrical genius! Suitable only for older children and adults.





St Luke's Trust

CCLA has been helping charities build solid foundations for more than 50 years. Find out more about how our long term investment services can help your organisation to build for the future. CCLA offers free asset allocation advice to help trustees and investment committees fulfill their responsibilities

Call us on 0800 022 3505
www.ccla.co.uk

With a history going back 450 years, St Luke's Trust knows a thing or two about long-term growth.

The charity's mission is to improve the lives of people living around London's Old Street, where the historical parish of St Luke's lies. A sizeable endowment allows it to run a much-valued community centre, but it does depend on good investment practices to maintain its annual income.

"We've invested in CCLA's COIF Charities Investment Fund for many years," says chief executive Martyn Craddock.

"We need an investment manager who understands the needs of charities like St Luke's, and that's what CCLA offers. Its strength is that it specialises in this sector, and can help us achieve the right balance of prudence and growth. After all, we have to consider not just our beneficiaries today, but also the people we might be serving in another 450 years."

Ref:StLU01

Sunday 28 February

Family comedy show



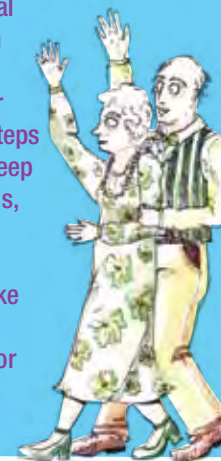
3pm - 4pm

Paul Lyalls perform an hour of stand-up comedy for children and the big people they drag along. See cabbage become funny and how to talk about bottoms without using the B word. You'll laugh, you'll ask for an ice-cream afterwards and you'll wonder why Teddy bear crisps, when turned upside, down look like rabbits with giant belly buttons! Suitable for children of all ages

Afternoon tea dance

3pm - 5pm

Take a twirl at a traditional afternoon tea dance, with time-honored music, a qualified dance instructor to lead you through the steps and a charming host to keep everything in order. All this, plus tea and scones, and a special visit from Miss Cherry Bakewell, will make a perfect afternoon's entertainment! Suitable for adults and older children



An evening with

John Hegley

7.30pm - 10pm

"loveable, eccentric and supremely talented" - The Independent

Poet-performer par excellence, John returns to the Finsbury Arts Festival delivering more "dazzling entertainment beyond your wildest dreams (as long as they're not too wild!)". An Edinburgh Festival regular, he is noted for his exploration of such diverse topics as dog hair, potatoes, handkerchiefs and the misery of human existence!

£7 per person

Licensed bar.
Please call
St Luke's Centre
on 020 7549 8181
to reserve
your tickets.

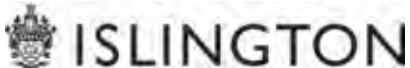


Thank you

The Finsbury Arts Festival is delivered by St Luke's Trust with a number of partners, funders and individuals who help make this community event possible.

Funders

The Finsbury Arts Festival has been generously supported by:



South Area Committee Fund Councillors
Ruth Polling, Jyoti Vaja & Donna Boffa

Finsbury Arts Festival

Partners

We pass on our grateful thanks to the following organisations for their support: All Change, Rowan Arts Project, Kings Corner Project, St Luke's Primary School, EC1 Music Project, Finsbury Library, Mary Ward Centre, Whitecross Street Market Traders Association, B2B Somali Arts and Education, Vibast Community Centre

Individuals

We are very grateful for the support and interest of local residents who so willingly volunteer their time to the festival.

In particular, we thank the St Luke's Events Steering Group whose ongoing commitment and assistance is invaluable:

Jamie Bamber, Iris Carman, Savi Yin-Chun Chapman, Ellen Cosgrove, Sheila Foley, Peter Glover, Karen Homer, Rakhia Ismail, Robert Lock, Councillor Ruth Polling and Tsigereda Tekletsadik

Finally, thanks to all the artists and performers for getting involved and enabling us to offer such a diverse programme of activity.

St Luke's Trust

St Luke's Trust is a 300 year old community charity with a modern focus to improve the lives for people living in and around south Islington. For more information or to receive our regular newsletter please email info@slpt.org.uk, phone 020 7549 8181 or visit our website www.slpt.org.uk



- Project management and financial control of new build, extension and refurbishment projects
- Site appraisal and design services
- Project monitoring

MONRO WHITE HILTON

Chartered Quantity Surveyors & Construction Consultants
16 - 25 Bastwick Street, London EC1V 3PS

contact: John Hayward 020 7253 5658
email: johnhayward@mwhl.com
www.mwhl.com



CHARLES RUSSELL

5 Fleet Place
London EC4M 7RD
United Kingdom

Tel: +44 (0)20 7203 5000
Email: enquiries@charlesrussell.co.uk
www.charlesrussell.co.uk

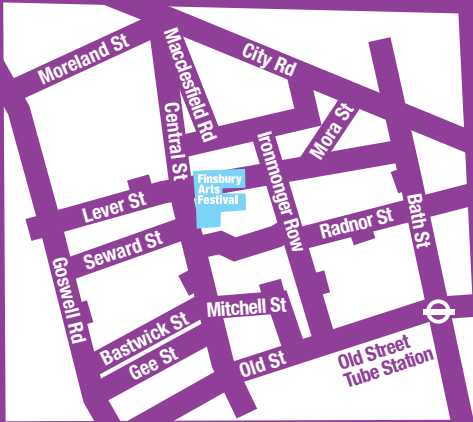
We are a top 50 full service law firm. Our clients range from international, FTSE and AIM listed businesses, to private companies, governments, not-for-profit organisations and private individuals.

Although our clients are diverse, our approach is always the same. We seek to develop relationships with our clients, understand their needs and deliver a quality service.



Understanding Relationships

How to find the Festival



Bus

The following buses stop nearby on Old Street, City Road, or Goswell Road: 55 / 56 / 141 / 214 / 243 / 271 / 505 / 43 / 21 / 4

Bus 812 (yellow Plus Bus) stops 10 yards away on Lever Street. This is an accessible bus, particularly suited for older people. The general public can use the service.

Underground

Nearest Stations are Old Street (Northern Line), Barbican (Circle, Hammersmith & City, Metropolitan), Angel (Northern).

Rail

Nearest rail service is Old Street. The St. Luke's Centre is also a short journey from Liverpool Street, King's Cross/St Pancras and other central London stations.

Information

Visit www.finartsfest.org.uk for the latest programme information.

Email info@slpt.org.uk to be added to our mailing list.

Contact Keren Wiltshire, St Luke's Community Centre Manager, on **020 7549 8188**, if you would like to help out with the festival.

Finsbury Arts Festival is delivered by:

**St. Luke's
Centre**

